



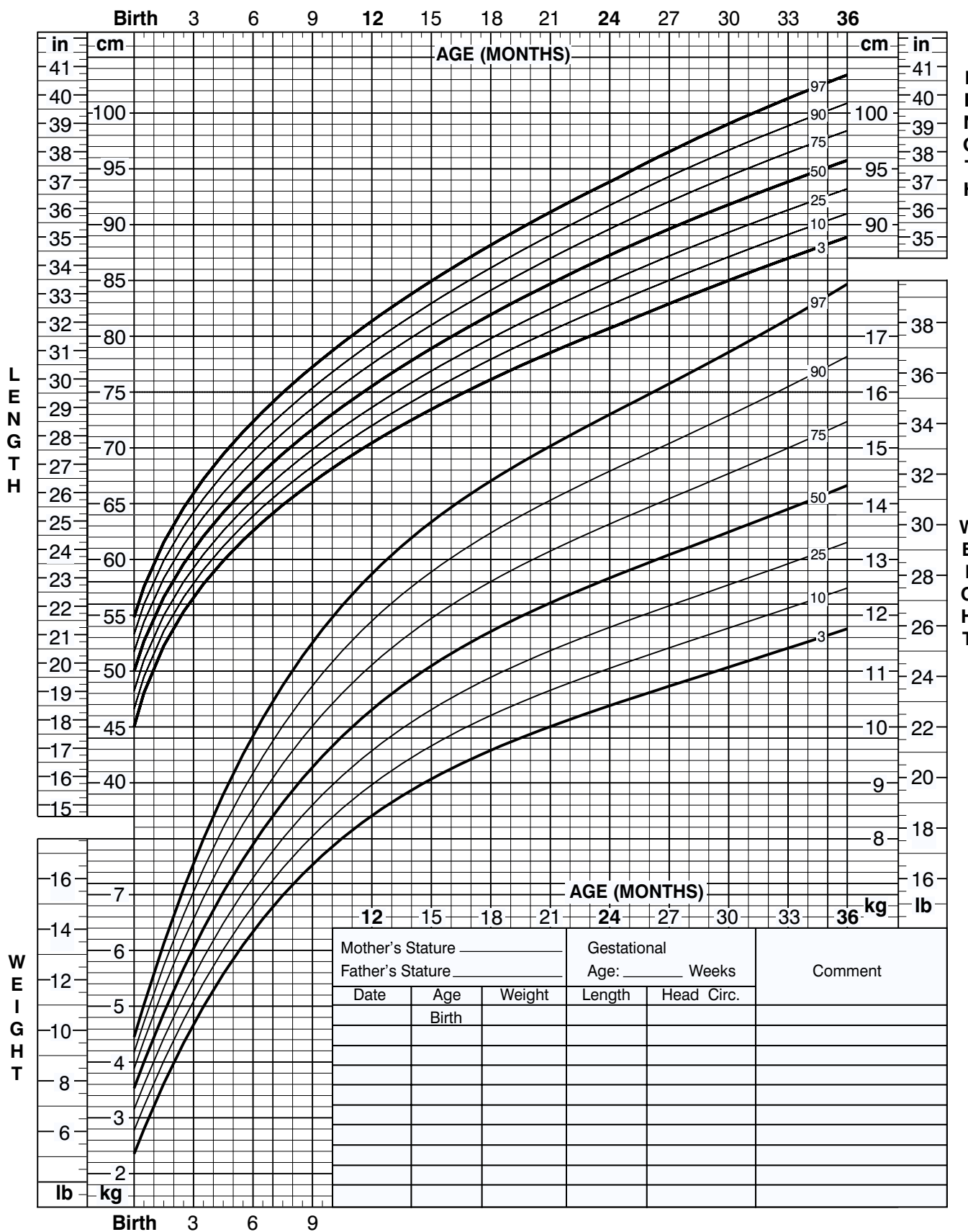
# Appendices



**Birth to 36 months: Boys**  
**Length-for-age and Weight-for-age percentiles**

NAME \_\_\_\_\_

RECORD # \_\_\_\_\_



Published May 30, 2000 (modified 4/20/01).  
 SOURCE: Developed by the National Center for Health Statistics in collaboration with the National Center for Chronic Disease Prevention and Health Promotion (2000).  
<http://www.cdc.gov/growthcharts>



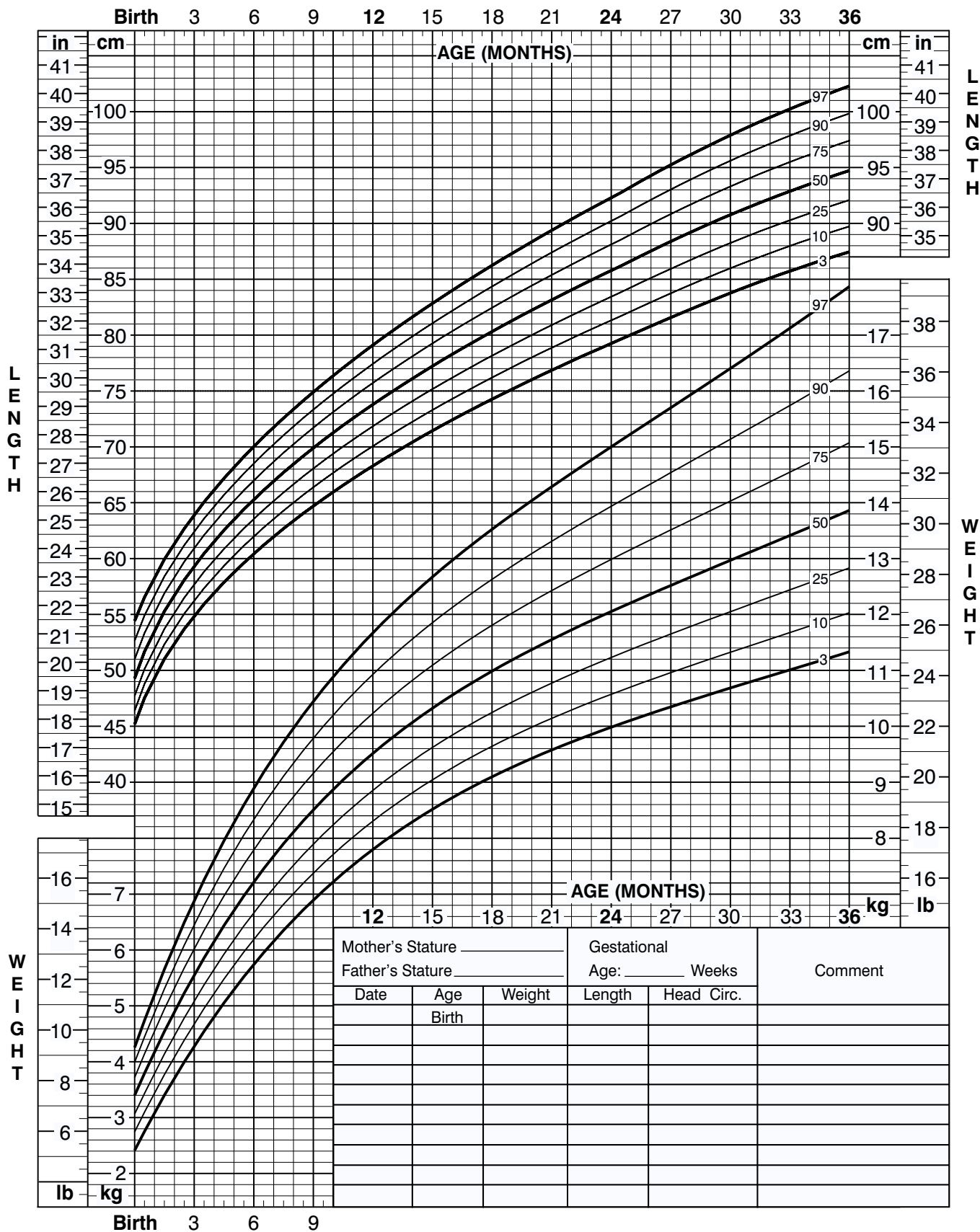
# Birth to 36 months: Girls

## Length-for-age and Weight-for-age percentiles

NAME \_\_\_\_\_

RECORD # \_\_\_\_\_

CENTERS FOR DISEASE CONTROL AND PREVENTION GROWTH CHARTS



Published May 30, 2000 (modified 4/20/01).  
 SOURCE: Developed by the National Center for Health Statistics in collaboration with the National Center for Chronic Disease Prevention and Health Promotion (2000).  
<http://www.cdc.gov/growthcharts>







# 2 to 20 years: Boys

## Stature-for-age and Weight-for-age percentiles

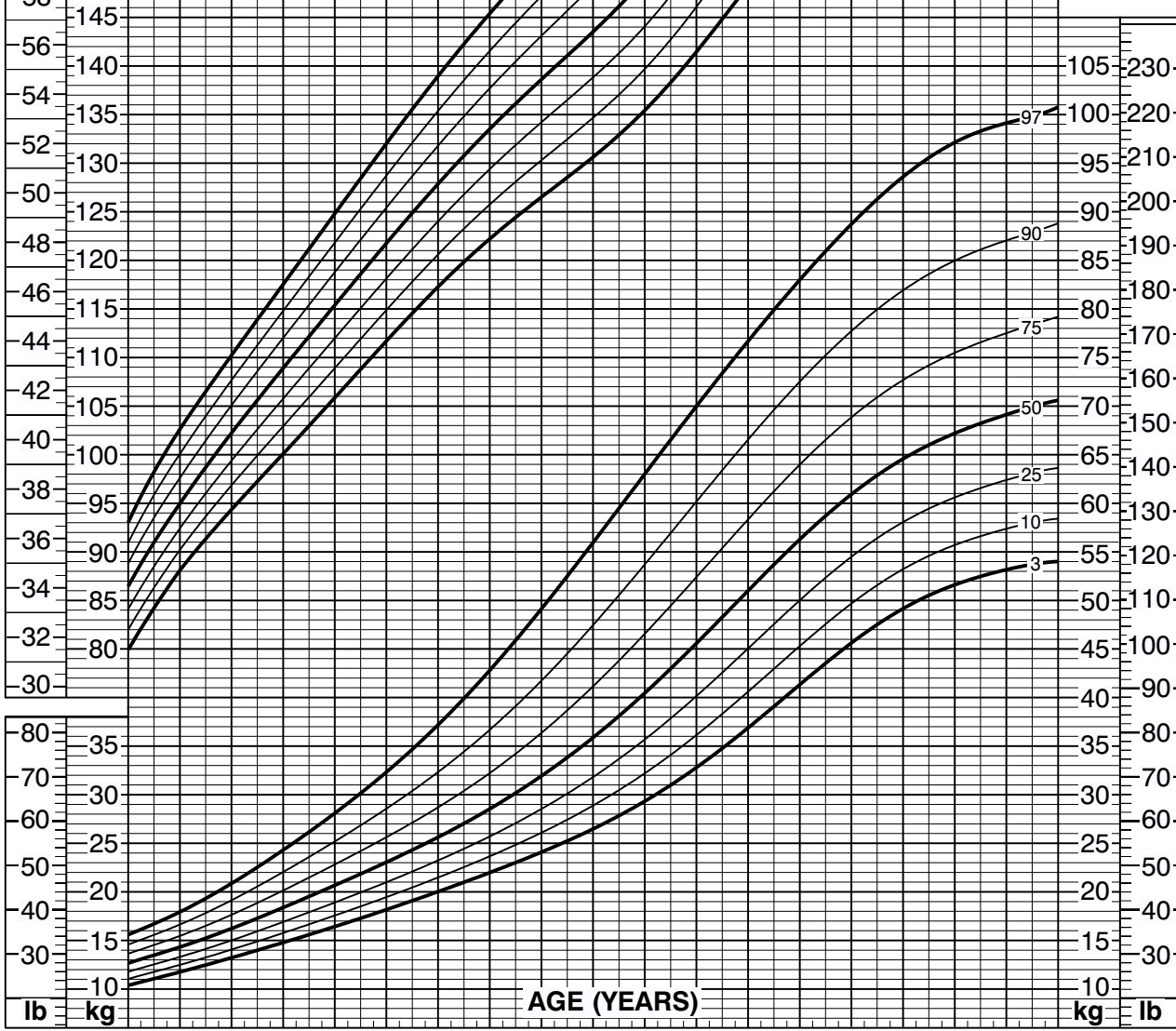
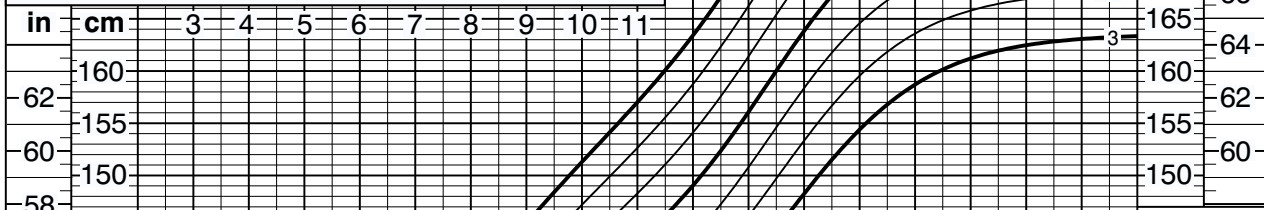
NAME \_\_\_\_\_

RECORD # \_\_\_\_\_

12 13 14 15 16 17 18 19 20

Mother's Stature _____		Father's Stature _____		
Date	Age	Weight	Stature	BMI*

\*To Calculate BMI: Weight (kg) ÷ Stature (cm) ÷ Stature (cm) x 10,000  
or Weight (lb) ÷ Stature (in) ÷ Stature (in) x 703



CENTERS FOR DISEASE CONTROL AND PREVENTION GROWTH CHARTS

Published May 30, 2000 (modified 11/21/00).  
SOURCE: Developed by the National Center for Health Statistics in collaboration with the National Center for Chronic Disease Prevention and Health Promotion (2000).  
<http://www.cdc.gov/growthcharts>



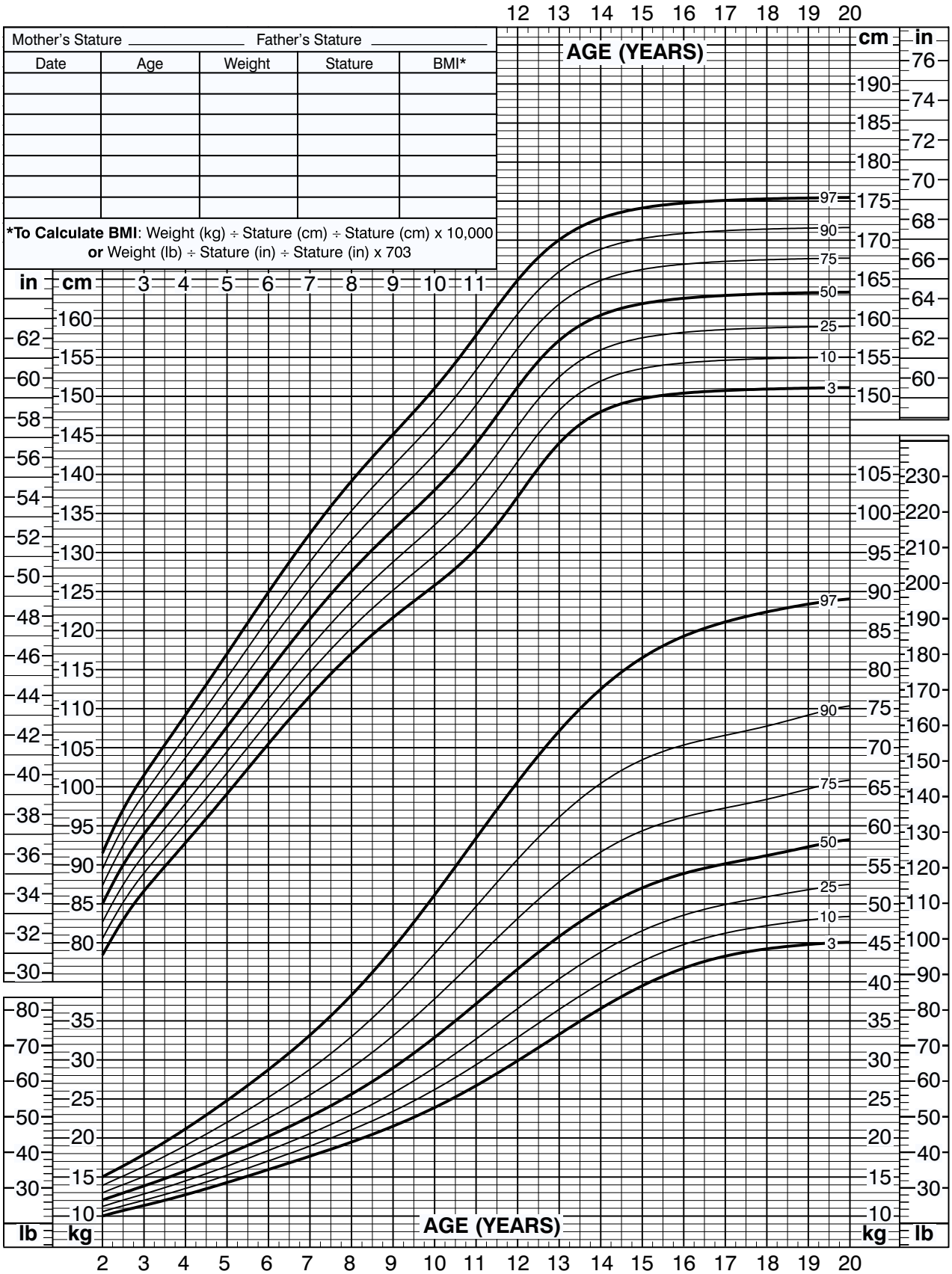
SAFER • HEALTHIER • PEOPLE™

# 2 to 20 years: Girls

## Stature-for-age and Weight-for-age percentiles

NAME \_\_\_\_\_

RECORD # \_\_\_\_\_



CENTERS FOR DISEASE CONTROL AND PREVENTION GROWTH CHARTS

Published May 30, 2000 (modified 11/21/00).  
 SOURCE: Developed by the National Center for Health Statistics in collaboration with the National Center for Chronic Disease Prevention and Health Promotion (2000).  
<http://www.cdc.gov/growthcharts>



SAFER • HEALTHIER • PEOPLE™





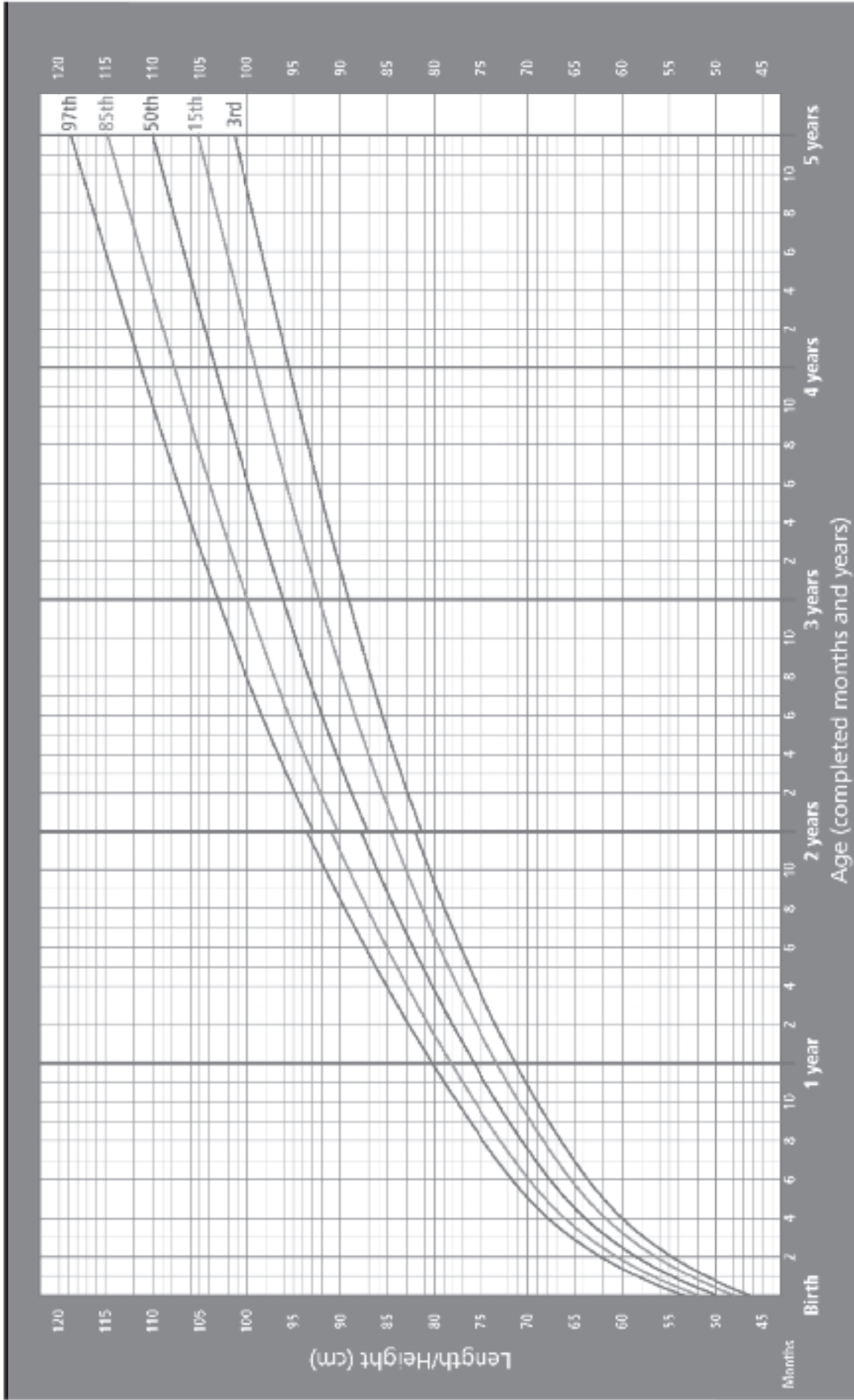






# Length/height-for-age BOYS

Birth to 5 years (percentiles)



WHO Child Growth Standards

# Length/height-for-age GIRLS

Birth to 5 years (percentiles)

